



FOLIO: 10/1080361

SEARCH DATE	TIME	EDITION NO	DATE
-----	----	-----	----
18/7/2022	9:33 AM	1	3/5/2005

LAND

LOT 10 IN DEPOSITED PLAN 1080361
AT RIVERWOOD
LOCAL GOVERNMENT AREA GEORGES RIVER
PARISH OF ST GEORGE COUNTY OF CUMBERLAND
TITLE DIAGRAM DP1080361

FIRST SCHEDULE

NEW SOUTH WALES LAND AND HOUSING CORPORATION

SECOND SCHEDULE (0 NOTIFICATIONS)

NIL

NOTATIONS

UNREGISTERED DEALINGS: NIL

*** END OF SEARCH ***



FOLIO: 14/35818

SEARCH DATE	TIME	EDITION NO	DATE
-----	----	-----	----
18/7/2022	9:36 AM	-	-

VOL 13079 FOL 9 IS THE CURRENT CERTIFICATE OF TITLE

LAND

LOT 14 IN DEPOSITED PLAN 35818
LOCAL GOVERNMENT AREA GEORGES RIVER
PARISH OF ST GEORGE COUNTY OF CUMBERLAND
TITLE DIAGRAM DP35818

FIRST SCHEDULE

NEW SOUTH WALES LAND AND HOUSING CORPORATION

SECOND SCHEDULE (0 NOTIFICATIONS)

NIL

NOTATIONS

UNREGISTERED DEALINGS: NIL

*** END OF SEARCH ***



FOLIO: 15/35818

SEARCH DATE	TIME	EDITION NO	DATE
-----	----	-----	----
18/7/2022	9:36 AM	-	-

VOL 13079 FOL 10 IS THE CURRENT CERTIFICATE OF TITLE

LAND

LOT 15 IN DEPOSITED PLAN 35818
LOCAL GOVERNMENT AREA GEORGES RIVER
PARISH OF ST GEORGE COUNTY OF CUMBERLAND
TITLE DIAGRAM DP35818

FIRST SCHEDULE

NEW SOUTH WALES LAND AND HOUSING CORPORATION

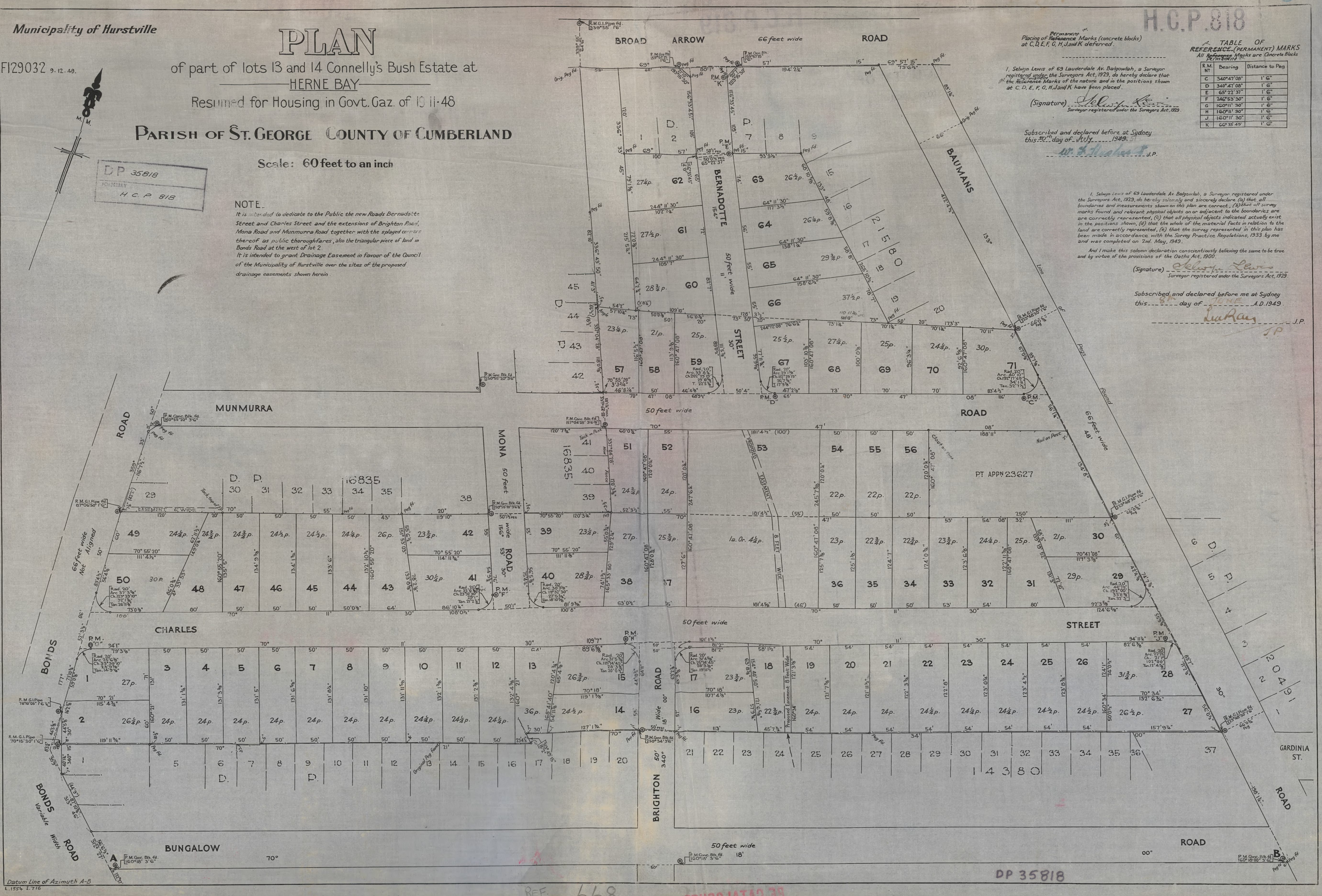
SECOND SCHEDULE (0 NOTIFICATIONS)

NIL

NOTATIONS

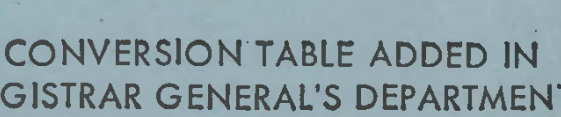
UNREGISTERED DEALINGS: NIL

*** END OF SEARCH ***



REF. 668

DP 35818



CONVERSION TABLE ADDED IN
REGISTRAR GENERAL'S DEPARTMENT

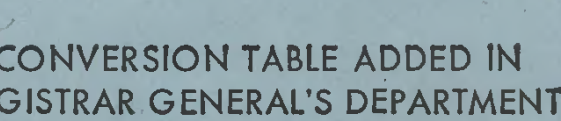
DP 35818

FEET	INCHES	METRES
-	1 1/4	0.032
-	1 3/4	0.044
-	3	0.076
-	3 1/2	0.089
-	4	0.102
-	4 1/2	0.114
-	5	0.127
-	7	0.178
-	8	0.203
-	9 1/2	0.241
-	10 1/2	0.267
1	-	0.305
1	6	0.457
1	6 1/4	0.464
1	8 1/2	0.521
3	3 3/4	1.010
3	6	1.067
3	6 1/8	1.070
3	8 1/4	1.124
4	-	1.219
4	5 3/4	1.365
4	6 1/2	1.384
6	-	1.829
7	-	2.134
8	-	2.438
8	5 3/4	2.584
8	10 7/8	2.715
10	-	3.048
11	11 3/4	3.651
12	4 7/8	3.781
12	5 5/8	3.800
13	6	4.115
14	-	4.267
14	6 7/8	4.442
14	7 3/8	4.455
14	9 7/8	4.518
15	-	4.572
15	2	4.623
15	7	4.750
16	2 3/8	4.937
17	-	5.182
17	9 7/8	5.432
18	10 5/8	5.756
19	11 1/2	6.083
20	-	6.096
20	0 1/2	6.109
20	7	6.274
21	-	6.401
21	1	6.426
21	2 1/4	6.458
21	10	6.655
22	2 1/2	6.769
22	5 3/8	6.842
23	4 1/4	7.118
23	9 7/8	7.261
23	10 7/8	7.287
25	6 1/8	7.776
26	7 3/8	8.112
26	11 7/8	8.226
27	-	8.230
27	5 1/2	8.369
28	3 1/8	8.614
28	3 1/2	8.623
28	3 3/4	8.630
29	1	8.865
29	1 3/8	8.874
29	10 3/8	9.103
30	-	9.144
30	3 1/8	9.223
31	4 1/2	9.563
31	4 5/8	9.566
31	5 3/8	9.585
32	-	9.754
32	1 3/4	9.798
32	3	9.830
32	6 3/8	9.916
32	6 7/8	9.928

CONVERSION TABLE ADDED IN
REGISTRAR GENERAL'S DEPARTMENT

DP 35818 CONTINUED

FEET	INCHES	METRES
32	7 1/2	9.944
33	-	10.058
33	3 3/4	10.154
33	8 3/4	10.281
33	11 7/8	10.360
34	0 1/2	10.376
34	1 1/4	10.395
35	9	10.897
37	2 7/8	11.351
37	3 1/4	11.360
37	3 7/8	11.376
40	1 1/4	12.224
40	7 1/2	12.383
40	10	12.446
41	3	12.573
42	2	12.852
42	4 7/8	12.925
42	6 7/8	12.976
43	-	13.106
43	3 3/8	13.192
44	5 7/8	13.560
44	8	13.614
44	9	13.640
44	10 1/2	13.678
45	7 3/4	13.913
46	-	14.021
46	3 1/8	14.100
46	4 1/8	14.126
46	5 5/8	14.164
46	8 1/4	14.230
47	-	14.326
47	2 1/8	14.380
48	-	14.630
50	-	15.240
50	0 1/8	15.243
50	0 1/4	15.246
50	0 1/2	15.253
50	0 7/8	15.262
50	1	15.265
50	1 1/4	15.272
50	1 1/2	15.278
50	4	15.342
52	3 1/8	15.929
52	3 1/2	15.939
53	-	16.154
54	-	16.459
54	2	16.510
54	4 1/2	16.574
54	9 3/4	16.707
54	11 7/8	16.761
55	-	16.764
55	6 1/2	16.929
55	9 7/8	17.015
56	-	17.069
56	0 1/2	17.082
56	0 7/8	17.091
56	1 1/4	17.101
56	1 3/4	17.113
56	4 1/2	17.183
56	4 5/8	17.186
56	5 7/8	17.218
56	6 1/2	17.234
56	6 3/4	17.240
57	-	17.374
57	1 3/4	17.418
57	9 3/4	17.621
57	10 1/4	17.634
58	-	17.678
58	1 1/2	17.717
58	5	17.805
58	7	17.856
58	8	17.882
59	0 7/8	18.005
59	1 1/8	18.012
59	8 7/8	18.209
60	-	18.288
60	0 3/4	18.307



CONVERSION TABLE ADDED IN
REGISTRAR GENERAL'S DEPARTMENT

DP 35818 CONTINUED

FEET	INCHES	METRES
61	-	18.593
62	11 1/2	19.190
63	0 1/2	19.215
63	2 7/8	19.275
63	8 7/8	19.428
64	-	19.507
64	2 3/4	19.577
64	6	19.660
64	11	19.787
65	-	19.812
65	4 7/8	19.936
65	5 5/8	19.955
66	-	20.117
66	0 3/4	20.136
67	0 1/8	20.425
68	9 1/2	20.968
68	10 5/8	20.996
70	-	21.336
70	1 1/4	21.368
70	11	21.615
71	-	21.641
71	2 1/8	21.695
72	-	21.946
72	0 7/8	21.968
72	10	22.200
73	-	22.250
73	0 1/8	22.254
73	1 1/4	22.282
73	6 1/2	22.416
73	10 3/4	22.523
74	-	22.555
74	0 1/2	22.568
74	7 7/8	22.755
75	4 1/4	22.968
76	6 1/4	23.324
77	11 3/4	23.768
78	2 1/8	23.828
78	7	23.952
79	1 5/8	24.120
79	3 1/8	24.159
80	-	24.384
80	1	24.409
81	2	24.740
81	9 3/8	24.927
82	6 3/8	25.156
82	7	25.171
82	10	25.248
83	4 1/2	25.413
83	7	25.476
85	-	25.908
86	0 3/4	26.232
86	10 1/4	26.473
87	10 3/4	26.791
89	0 1/2	27.140
89	1 1/4	27.159
89	1 3/4	27.172
89	6 5/8	27.295
92	3 5/8	28.134
92	6 5/8	28.210
93	9 1/2	28.588
94	1	28.677
94	11 1/4	28.937
95	9 5/8	29.200
96	3 1/4	29.343
99	7 5/8	30.369
100	-	30.480
100	0 1/8	30.483
100	8	30.683
101	1 1/2	30.823
102	7 1/4	31.274
103	10 7/8	31.671
105	-	32.004
105	7	32.182
107	4 1/8	32.718
108	0 1/2	32.931
109	7	33.401
109	10	33.477



CONVERSION TABLE ADDED IN
REGISTRAR GENERAL'S DEPARTMENT

DP 35818 -- CONTINUED

FEET	INCHES	METRES
110	11 3/4	33.826
111	-	33.833
111	4 1/2	33.947
111	11 1/8	34.115
113	-	34.442
113	9 1/8	34.674
114	11 3/4	35.046
115	4 3/4	35.173
116	5 1/2	35.497
116	7 1/2	35.547
117	2 7/8	35.735
117	3 1/4	35.744
117	3 1/2	35.751
117	3 7/8	35.760
118	0 5/8	35.982
119	1 3/8	36.306
119	10	36.525
119	11 3/4	36.570
120	-	36.576
120	0 1/4	36.582
120	3 1/4	36.659
120	3 3/8	36.662
120	4 3/4	36.697
120	7 3/4	36.773
121	3 1/8	36.960
121	6 5/8	37.049
121	7 1/4	37.065
121	7 3/8	37.068
121	8 3/8	37.094
121	11 1/2	37.173
122	3 3/4	37.281
122	8	37.389
122	11 3/8	37.475
123	0 1/4	37.497
123	4 1/2	37.605
123	6 1/8	37.646
123	8 3/4	37.713
124	0 3/4	37.814
124	1	37.821
124	6 5/8	37.963
124	7	37.973
125	1 1/8	38.129
125	7 1/8	38.281
127	1 3/4	38.754
127	6	38.862
128	3 1/2	39.103
128	4 5/8	39.132
131	-	39.929
131	1 3/4	39.973
131	3	40.005
131	3 3/8	40.015
131	5	40.056
131	6 5/8	40.097
131	8 1/4	40.138
131	10	40.183
131	11 5/8	40.224
132	1 3/8	40.269
132	2 7/8	40.307
132	4 1/2	40.348
132	4 5/8	40.351
132	6 3/4	40.405
132	6 7/8	40.408
132	10 1/2	40.500
133	6	40.691
133	8 5/8	40.757
134	1 3/4	40.888
134	8	41.046
134	9 3/8	41.081
135	5	41.275
138	1 1/4	42.094
149	0 1/4	45.422
157	9 1/4	48.089
158	6 1/2	48.324
173	3	52.807
181	4 1/8	55.274
181	4 1/2	55.283
181	4 5/8	55.286

CONVERSION TABLE ADDED IN
REGISTRAR GENERAL'S DEPARTMENT

DP 35818 CONTINUED

FEET	INCHES	METRES
188	11	57.582
194	2 1/4	59.188
198	1 1/4	60.382
245	7 5/8	74.870
247	6 1/4	75.444
250	-	76.200
412	4 1/2	125.692
600	0 3/4	182.899

LINKS	METRES
26.78	5.887
29	5.834
33.73	6.785
46.34	9.322
47.18	9.491
50.33	10.125
65	13.076
68.79	13.838
100	20.117
181.38	36.488

AC	RD	P	SQ M
-	-	21	531.1
-	-	22	556.4
-	-	22 3/4	575.4
-	-	23	581.7
-	-	23 1/4	588.1
-	-	23 3/4	600.7
-	-	24	607
-	-	24 1/4	613.4
-	-	24 1/2	619.7
-	-	24 3/4	626
-	-	25	632.3
-	-	25 1/2	645
-	-	25 3/4	651.3
-	-	26	657.6
-	-	26 1/4	663.9
-	-	26 1/2	670.3
-	-	26 3/4	676.6
-	-	27	682.9
-	-	27 1/4	689.2
-	-	27 1/2	695.6
-	-	28 3/4	727.2
-	-	29	733.5
-	-	29 3/4	752.5
-	-	30	758.8
-	-	30 1/4	765.1
-	-	31 3/4	803
-	-	36	910.5
-	-	37 1/2	948.5
1	-	4 1/4	4154